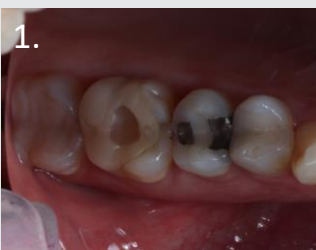




## DR. JOSÉ CARLOS GARÓFALO

Professor José Carlos Garófalo studied at the University of São Paulo Dental School. He holds a Master of Science and a Specialist degree in Restorative Dentistry by the same institution. He is co-owner of Eco Academy, Professor and coordinator of continuing educational, specialization and immersion courses in Restorative Dentistry. He is the author of the book Atlas of Laminated Veneers (1998).



1. Exchange of unsatisfactory restorations on elements 15 and 16.



2. After teeth prep. Cl II for 15 and indirect overlay restoration for 16.



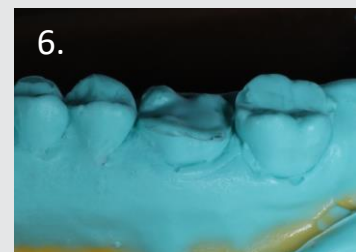
3. 15: a ring and matrix system were used to transform cl II in cl I, using Forma™ A2B, light cured with Valo™ Grand.



4. 15: Forma™ A2B was applied using incremental technique. An ochre pigment was used to characterize the fissures.



5. After A2E last layer, light curing using Valo™ Grand. Sectional matrix was removed. Tooth was finished and polished using Jiffy™ system.



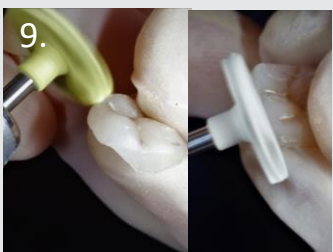
6. Onlay prep impression using Panasil®.



7. Indirect restoration using Forma™ A2B, ochre pigment on the fissures and Forma™ A1E. Advantages: better light curing, outside mouth, better proximal contacts.



8. After occlusal adjustments, finishing and polishing using Jiffy™ polishers' discs.



9. Final polishing using Jiffy™ Natural.



10. Cementation using Universal resin cement.



11. After cement excess removal and light curing using Valo™ Grand (all faces).



12. Final. Occlusal view.

